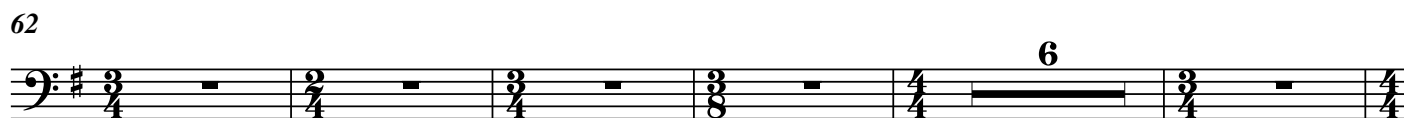
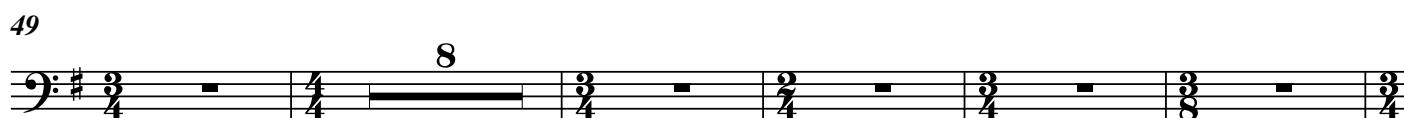
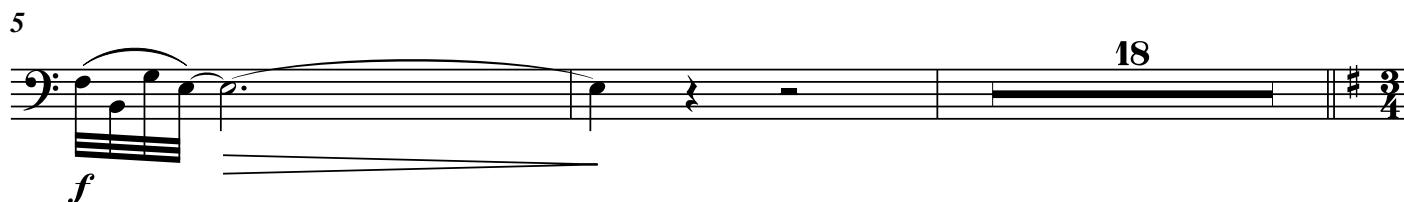


低音嗩吶

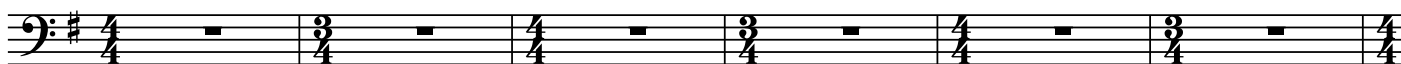
唐響

伍卓賢曲
(2017修訂合奏版)

夢 ♩ = 62 ca. 稍自由



73



79



94 盛 ♩ = 78



170



178



188



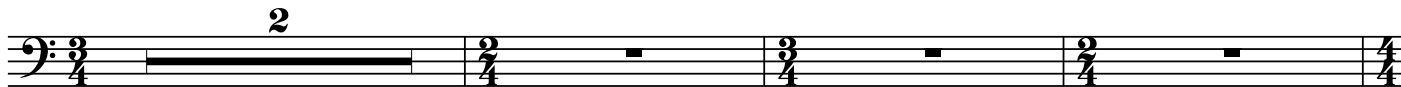
196



205



214



219 4 223 30 12

ff

266

f

270

f

274

f

278

f

282

f

286 7 41 舞 ♩ = 62 ca.

f

336 12 348 f

f

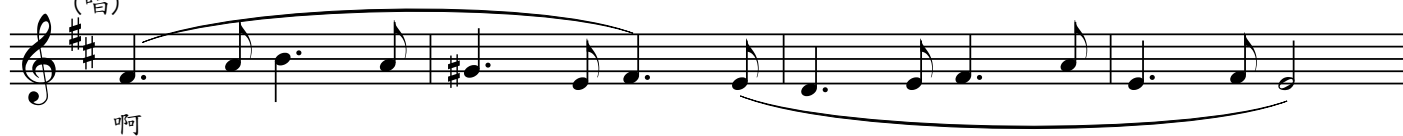
351 同 ♩ = 56 16

ff

369



373 (唱)



377



381



385



389 稍慢

